

MYSTIC MOMENTS

CERTIFICATE OF ANALYSIS
ORGANIC RED C.P ROSEHIP OIL

Batch No: 4562408
Best Before End: November
2026

TEST	SPECIFICATION	ANALYSIS
Specific Gravity @ 20°C	0.830 – 0.990	0.840
Refractive Index @ 20°C	1.360 – 1.490	1.372
Free Fatty Acid (% as Oleic)	7.0 maximum	0.34
Iodine Value (calc)	130.0 – 185.0	168.7
Peroxide Value (meq/O ² /kg)	20.0 maximum	1.2
Acid Value (mg KOH/g)	14.0 maximum	0.8
Saponification Value (mg KOH/g)	165.0 – 206.0	182.6

FATTY ACID PROFILE (%)		
C16:0 Palmitic	2.0 – 10.0	6.7
C18:0 Stearic	1.0 – 7.0	4.5
C18:1 Oleic	10.0 – 30.0	22.1
C18:2 Linoleic	37.0 – 70.0	41.2
C18:3 Alpha Linolenic	10.0 – 50.0	24.5
C20:0 Arachidic	2.0 maximum	0.4

MYSTIC MOMENTS

Product Name	Organic Red CP Rosehip Canina Fruit Oil				
INCI Name	Rosa Canina Fruit Oil				
Date	10/05/2019	Product Code	OVCROSE	Revision	1

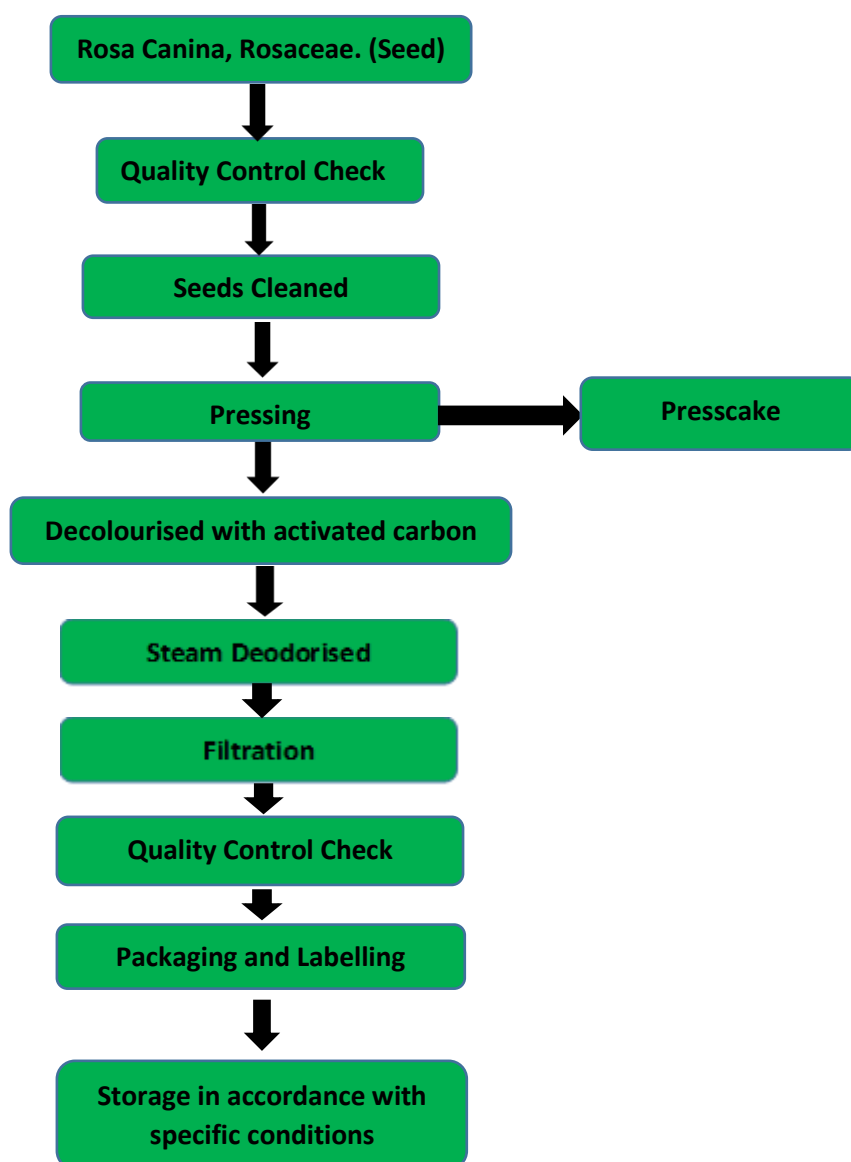
Material	Cas Number	Cosmetic Allergens Inclusion (%)
ALPHA-ISOMETHYLIONONE	127-51-5	-
AMYL CINNAMAL	122-40-7	-
AMYL CINNAMYL ALCOHOL	101-85-9	-
ANISE ALCOHOL	105-13-5	-
BENZYL ALCOHOL	100-51-6	-
BENZYL BENZOATE	120-51-4	-
BENZYL CINNAMATE	103-41-3	-
BENZYL SALICYLATE	118-58-1	-
BUTYLPHENYLMETHYLPROPIONAL	80-54-6	-
CINNAMAL	104-55-2	-
CINNAMYL ALCOHOL	104-54-1	-
CITRAL	5392-40-5	-
CITRONELLOL	106-22-9	-
COUMARIN	91-64-5	-
EUGENOL	97-53-0	-
EVERNIA FURFURACEA EXTRACT	90028-67-4	-
EVERNIA PRUNASTRI EXTRACT	90028-68-5	-
FARNESOL	4602-84-0	-
GERANIOL	106-24-1	-
HEXYL CINNAMAL	101-86-0	-
HYDROXYCITRONELLAL	107-75-5	-
HYDROXYISOHEXYL 3-CYCLOHEXENE CARBOXALDEHYDE	31906-04-4	-
ISO EUGENOL	97-54-1	-
LIMONENE	5989-27-5	-
LINALOOL	78-70-6	-
METHYL 2-OCTYNOATE	111-12-6	-

*** NIL ALLERGENS ***

DISCLAIMER: This information relates only to the specific material designated and may not be valid for such material used in combination with any other materials or in any process. Such information is, to the best of the company's knowledge and belief, accurate and reliable as of the date indicated. However, no warranty guarantee or representation is made to its accuracy, reliability or completeness. It is the user's responsibility to satisfy himself as to the suitability of such information for his own particular use.

MYSTIC MOMENTS

Product Name	Organic Rosehip Red Oil
Date	30.05.2017



MYSTIC MOMENTS

Document Date:

May 2019

STATEMENT

We hereby certify that **Organic Red CP Rosehip Canina Fruit Oil**, is free of genetically modified materials and components. No ingredients, additives or processing aids of GM origin are used in the processing and purifying of the oil.

MYSTIC MOMENTS

Material Safety Data Sheet

01. IDENTIFICATION OF THE SUBSTANCE/PREPARATION & THE COMPANY/UNDERTAKING

1.1	PRODUCT IDENTIFIER	
	PRODUCT NAME	Organic Red Rosehip Canina Fruit Oil
	PRODUCT CODE	WHC1104
	INCI NAME	Rosa Canina Fruit Oil
	CAS	84696-47-9 84603-93-0
	EC	283-652-0
1.2	RELEVANT IDENTIFIED USES OF THE SUBSTANCE OR MIXTURE, AND USES ADVISED AGAINST	
	No additional data	
1.3	DETAILS OF THE SUPPLIER OF THE SAFETY DATA SHEET	
	COMPANY ADDRESS	Madar Corporation Limited 19 - 20 Sandleheath Industrial Estate Fordingbridge SP6 1PA
	EMAIL ADDRESS	technical@madarcorporation.co.uk
1.4	EMERGENCY TELEPHONE NUMBER	
	+ 44 (0) 1425 655 555	
	Available during office hours.	

02. HAZARDS IDENTIFICATION

2.1	CLASSIFICATION OF THE SUBSTANCE OR MIXTURE	
	CLASSIFICATION (EC 1272/2008)	
	Not classified as hazardous.	
2.2	LABEL ELEMENTS	
	LABEL IN ACCORDANCE WITH (EC) NO 1272/2008	
	None	
	SIGNAL WORD	None
	HAZARD STATEMENTS	
	None	
	PRECAUTIONARY STATEMENTS AND/OR SUPPLEMENTARY STATEMENTS	
	None	
	SUPPLEMENTARY STATEMENTS	
	None	
2.3	OTHER HAZARDS	
	ADVERSE EFFECTS ON HUMAN HEALTH	No additional data
	ADVERSE PHYSIO-CHEMICAL PROPERTIES	No additional data

03. COMPOSITION/INFORMATION ON INGREDIENTS

3.1/3.2	SUBSTANCES/MIXTURES
---------	---------------------

MYSTIC MOMENTS

Material Safety Data Sheet

No additional data

04. FIRST AID MEASURES

4.1 DESCRIPTION OF FIRST AID MEASURES

INHALATION

Remove to fresh air and remain in a position which is comfortable for breathing. Seek medical attention.

INGESTION

Do NOT induce vomiting. Ingestion may cause nausea and vomiting. Immediately rinse mouth and provide fresh air. Seek medical attention.

SKIN CONTACT

Remove contaminated clothing and wash before reuse. Wash skin thoroughly with soap and water. If discomfort occurs/continues, seek medical attention.

EYE CONTACT

Rinse eyes with clean water for a minimum of fifteen minutes. If safe to do so, remove to contact lenses and continue to rinse. Seek medical attention.

4.2 MOST IMPORTANT SYMPTOMS AND EFFECTS, BOTH ACUTE AND DELAYED

No additional data

4.3 INDICATION OF ANY IMMEDIATE MEDICAL ATTENTION AND SPECIAL TREATMENT NEEDED

Treat symptomatically.

05. FIREFIGHTING MEASURES

5.1 EXTINGUISHING METHODS

- Carbon Dioxide
- Alcohol Resistant Foam
- Dry Chemical Powder

Do NOT use water.

5.2 HAZARDS ARISING FROM THE SUBSTANCE OR MIXTURE

In the event of fire this product can generate oxides of carbon and other toxic gases. A fire will often produce a thick black smoke. Exposure to decomposition products may be hazardous to health. Do not breathe in smoke. The product is classed as inflammable, low risk.

5.3 ADVICE FOR FIREFIGHTERS

Wear self-contained respiratory equipment and appropriate protective clothing at all times. Do not inhale any gases or fumes which may be generated. Containers in close proximity to fire should be removed to a safe distance and the exterior of the container cooled with water.

06. ACCIDENTAL RELEASE MEASURES

6.1 PERSONAL PRECAUTIONS, PROTECTIVE EQUIPMENT AND EMERGENCY PROCEDURES

Wear protective clothing as recommended at all times. Handle the product using protective gloves resistant to the chemicals exposed. Avoid contact with skin and inhalation of its vapours. Maintain adequate ventilation in the working area after spilling.

6.2 ENVIRONMENTAL PRECAUTIONS

Do not allow the product to enter drains or sewers, water course or the ground. Do not allow the product to enter the environment.

MYSTIC MOMENTS




Material Safety Data Sheet

6.3	METHODS AND MATERIALS FOR CONTAINMENT AND CLEANING UP THIS PRODUCT
	Cover with an inert, inorganic, non-combustible absorbent material (e.g., dry-lime, sand, soda ash). Place in covered containers and dispose of in accordance with local authority guidelines.
6.4	REFERENCE TO OTHER SECTIONS
	Section 13

07. EXPOSURE CONTROLS AND/OR PERSONAL PROTECTION

7.1	PRECAUTIONS FOR SAFE HANDLING
	Adhere to all good health, safety and hygiene practices. If handling large/heavy packages or drums, ensure the use of suitable mechanical equipment at all times. Avoid contact with skin, eyes and clothing. Remove and wash contaminated clothing before re-use. Wear personal protective equipment. Do not breathe vapours or spray mist. Use only in area provided with adequate ventilation. Do not eat, drink or smoke whilst handling this product.
7.2	CONDITIONS FOR SAFE STORAGE, INCLUDING ANY INCOMPATIBILITIES
	Store in a cool, dry, well-ventilated area. Protect from freezing, heat and light including sunlight. Protect from all potential sources of ignition. Keep all containers tightly sealed when not in use. Keep storage temperatures not above 20°C.
7.3	SPECIFIC END USE(S)
	No additional data

08. EXPOSURE CONTROLS

8.1	CONTROL PARAMETERS
	No additional data
8.2	EXPOSURE CONTROLS
	PROTECTIVE EQUIPMENT
	   <p>Use all equipment as required and/or recommended for safe handling.</p>
PROCESS CONDITIONS	No additional data
ENGINEERING MEASURES	Install sufficient ventilation across all areas. Install readily available eyewash stations and safety showers.
RESPIRATORY EQUIPMENT	In the event of airborne contamination or ventilation failure ensure the use of suitable respiratory equipment/protection.
HAND PROTECTION	Wear appropriate protective chemically resistant gloves which comply with EN374.
EYE PROTECTION	Wear appropriate protective safety goggles which comply with EN166.
HYGIENE MEASURES	Good hygiene practices are always recommended, especially when handling oils, chemicals or any other similar type of material.
SKIN PROTECTION	Wear appropriate protective chemically resistant clothing at all times to prevent any potential skin contact with this product.

MYSTIC MOMENTS

Material Safety Data Sheet

ENVIRONMENTAL EXPOSURE CONTROLS	Do not allow the product to enter drains or sewers, water course or the ground. Prevent environmental contamination.
OTHER AND/OR PERSONAL PROTECTIVE MEASURES	No additional data

09. PHYSICAL AND CHEMICAL PROPERTIES

7.1	INFORMATION ON BASIC PHYSICAL & CHEMICAL PROPERTIES
APPEARANCE (E.G. LIQUID)	Liquid
COLOUR	Orange – Reddish Orange – Dark Red
ODOUR	Characteristic
SPECIFIC GRAVITY	~0.940 @ 20°C
REFRACTIVE INDEX	~1.475 @ 20°C
FLASH POINT (°C)	>360.0
AUTO-IGNITION TEMPERATURE (°C)	No additional data
MELTING POINT (°C)	No additional data
BOILING POINT (°C)	No additional data
SOLUBILITY	Insoluble in water. Soluble in most common organic solvents.
VAPOUR PRESSURE	No additional data
9.2	ADDITIONAL INFORMATION
	No additional data

10. STABILITY & REACTIVITY

10.1	REACTIVITY
	Expected to remain stable under recommended storage conditions.
10.2	CHEMICAL STABILITY
	Expected to remain stable under recommended storage conditions.
10.3	POSSIBLE HAZARDOUS REACTIONS
	Not expected under normal conditions.
10.4	CONDITIONS TO AVOID
	No additional data
10.5	INCOMPATIBLE MATERIALS
	Strong Acids, Alkalis, Oxidizing Agents.
10.6	HAZARDOUS DECOMPOSITION PRODUCTS
	In the event of fire this product may generate oxides of carbon and other toxic gases.

11. TOXOLOGICAL INFORMATION

11.1	ACUTE TOXICITY
-------------	-----------------------

MYSTIC MOMENTS

Material Safety Data Sheet

	Not classified
11.2	SKIN CORROSION/IRRITATION
	Not classified
11.3	SERIOUS EYE DAMAGE/IRRITATION
	Not classified
11.4	RESPIRATORY/SKIN SENSITIZATION
	Not classified
11.5	GERM CELL MUTAGENICITY/CARCINOGENICITY/REPRODUCTIVE TOXICITY
	Not classified
11.6	STOT – SINGLE EXPOSURE
	Not classified
11.7	STOT – REPEATED EXPOSURE
	No classified
11.8	ASPIRATION HAZARD
	Not classified
11.9	GENERAL AND/OR ADDITIONAL DATA; E.G. PHOTOTOXICITY
	No additional data

12. ECOLOGICAL AFFECTS

12.1	TOXICITY
	Not classified
12.2	PERSISTENCE & DEGRADABILITY
	No additional data
12.3	BIOACCUMULATIVE POTENTIAL
	Potential for bio-concentration in aquatic organisms is low.
12.4	MOBILITY IN SOIL AND/OR WATER
	No additional data
12.5	RESULTS OF A PBT/vPvB ASSESSMENT
	No additional data
12.6	OTHER ADVERSE EFFECTS
	No additional data

13. DISPOSAL CONSIDERATIONS

13.1	WASTE TREATMENT METHODS
	Always dispose of this product in accordance with local and national regulations. Do not allow entry into drains or waterways. Do not contaminate the ground or water with waste. Do not dispose of waste into the environment. Waste management is carried out without endangering human health, without harming the environment and, in

MYSTIC MOMENTS

Material Safety Data Sheet

particular without risk to water, air, soil, plants or animals. Recycling is always preferable to disposal. When containers have been fully emptied, ensure the labelling remains.

14. TRANSPORT INFORMATION

14.1	UN NUMBER	Not regulated
14.2	UN PROPER SHIPPING NAME	Not applicable
14.3	TRANSPORT HAZARD CLASS(ES)	Not applicable
14.4	PACKING GROUP	Not applicable
14.5	ENVIRONMENTAL HAZARDS	Not applicable
14.6	SPECIAL PRECAUTIONS FOR USER	Details throughout document: 6, 7, 8
14.7	TRANSPORT IN BULK ACCORDING TO ANNEX II OF MARPOL73/78 AND THE IBC CODE	No additional data

15. REGULATORY INFORMATION

15.1	SAFETY, HEALTH AND ENVIRONMENTAL REGULATIONS/LEGISLATION SPECIFIC FOR THE SUBSTANCE OR MIXTURE	
	This Safety Data Sheet was prepared in accordance with EC Regulation (EC) 1907/2006 (REACH), 1272/2008 (CLP), EC 453/2010&830/2015.	
15.2	CHEMICAL SAFETY ASSESSMENT	
	No additional data	

16. OTHER INFORMATION

16.1	HAZARD STATEMENTS	None
16.2	REVISION DATE	27/06/2022
16.3	REVISION NUMBER	4

Product Specification

PRODUCT	Organic Red CP Rosehip Canina Fruit Oil				
CODE	WHC1104	DATE	17/06/2022	REVISION	6

DESCRIPTION	Rosa Canina Fruit Oil is an oil from the Hip Rose, Rosa canina L., Rosaceae				
INCI NAME	Rosa Canina Fruit Oil				
CAS NUMBER	84696-47-9	EC NUMBER		283-652-0	
	84603-93-0				

CHARACTERISTICS	
APPEARANCE AT ROOM TEMPERATURE	Liquid
COLOUR	Orange – Reddish Orange – Dark Red
ODOUR	Characteristic

ANALYSIS	
SPECIFIC GRAVITY (g/ml)	0.830 – 0.990 @ 20°C
REFRACTIVE INDEX	1.360 – 1.490 @ 20°C
PEROXIDE VALUE (meq/kg) (AT TIME OF PRODUCTION ANALYSIS)	≤20.0
ACID VALUE (mg KOH/g)	≤14.0
FREE FATTY ACID (% AS OLEIC)	≤7.00
SAPONIFICATION VALUE (mg KOH/g)	165.0 – 206.0
IODINE VALUE (mg/g)	130.0 – 185.0

FATTY ACID PROFILE (%)		
C16:0	PALMITIC ACID	2.00 – 10.0
C18:0	STEARIC ACID	1.00 – 7.00
C18:1	OLEIC ACID	10.0 – 30.0
C18:2	LINOLEIC ACID	35.0 – 70.0
C18:3	LINOLENIC ACID	≤50.0
C20:0	ARACHIDIC ACID	≤2.00

MYSTIC MOMENTS

Document Date: May 2019

STATEMENT

We hereby confirm that Organic Red CP Rosehip Canina Fruit Oil is suitable for vegans